



CHECK LIST

Facts of Light

November 13 - January 9, 2022

Cathouse Proper at 524 Court St Brooklyn, NY

artists: Xingze Li, Robert(a) Marshall, J Pasila, Ethan Ryman,
Elisa Sighicelli and Gwenn Thomas

guest curator: Robert(a) Marshall



Gwenn Thomas, *Sky Shaped Window (Ingots III-XIII)*, 2021, Cast neodymium glass, 4.5 x 6 x 2 in.

\$1250 each

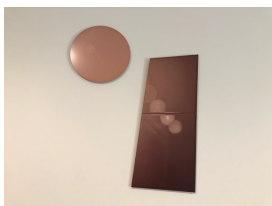
Sky Shaped Window (Small Ingots I and II), 4.5 x 5 x 1.25 in.

\$1000 each



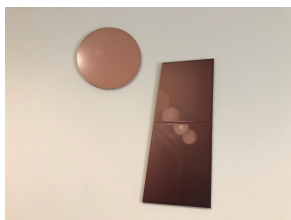
Gwenn Thomas, *Moments of Place II*, 2013-2014, C-print, aluminum frame, 18 x 25 in. *A/P*

\$9000



Xingze Li, *Untitled*, 2021, Dye sublimation on aluminum, 8 x 8 in. *A/P*

\$600



Xingze Li, *Untitled*, 2021, Dye sublimation on aluminum, 8 x 18 in. *A/P*

\$800



Gwenn Thomas, *Moments of Place VII*, 2014, C-print, painted wooden frame, 5.75 x 26.5 in.
\$6500



Gwenn Thomas, *Doorway (Alcântara)*, 2014, HD C-print with wood frame, 15.25 x 12.25 in. 2/2
\$4500



Gwenn Thomas, *Moments of Place VIII*, 2014, C-print, painted wooden frame, 7.75 x 17.25 in.
\$5500



Ethan Ryman, *Still Life #55*, 2021, Dye sublimation on aluminum with metal hinge, 28 ¼ x 28 ¼ in.
\$4500



Robert(a) Ruisza Marshall, *Underground*, 2019, UV curable ink on mirrored Dibond, 20 x 15 in.
\$2500



Elisa Sighicelli, *Untitled (3420)*, 2020, Photograph printed on satin, 55 x 46 in.
\$15000



Robert(a) Ruisza Marshall, *Curtain (toward a portrait of my mother)*, 2019, Latex ink on silver vinyl mounted on Dibond, 48 x 36 in.
\$7000



J Pasila, *1:19, 1.10*, 2007, Archival digital print, 28 x 24 in.
1/3
\$3500



J Pasila, *10:41, 10.21*, 2021, Archival digital print, 32 x 24 in. *1/3*
\$4000



Xingze Li, *Untitled Brooklyn*, 2019, Photo paper and spray paint on wood panel, 8 x 10 in. *A/P*
\$500



Robert(a) Ruisza Marshall, *Hotel Corridor Santa Monica*, 2019, UV curable ink on mirrored Dibond, 20 x 15 in.
\$2500



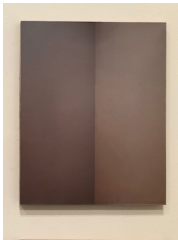
J Pasila, *12:19, 1.16*, 2009, Archival digital print, 9 x 12 in. 1/3
\$1500



Xingze Li, *Untitled*, 2021, Dye sublimation on aluminum, 11
 $7/8$ x 11 $7/8$. A/P
\$800



Xingze Li, *Untitled Brooklyn*, 2019, Photo paper on wood
panel, 8 x 10 in. A/P
\$500



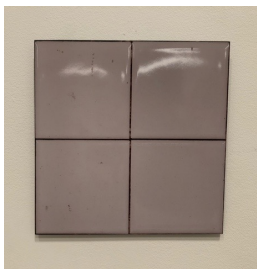
Xingze Li, *Untitled Brooklyn*, 2019, Photo paper and spray paint on wood
panel, 8 x 10 in. A/P
\$500



Xingze Li, *Untitled Brooklyn*, 2019, Photo paper and spray
paint on wood panel, 8 x 10 in. A/P
\$500



Xingze Li, *Untitled Rutland*, 2019, Photo paper and spray
paint on wood panel, 8 x 10 in. A/P
\$500



Xingze Li, *Untitled*, 2021, Dye sublimation on aluminum, 7 3/8 x 7 5/8. A/P
\$800



Xingze Li, *Untitled*, 2019, Photo paper and spray paint on wood panel, 8 x 10 in. A/P
\$500



Xingze Li, *Untitled Brooklyn*, 2019, Photo paper and spray paint on wood panel, 8 x 10 in. A/P
\$500